

# INGENIERÍA INVERSA

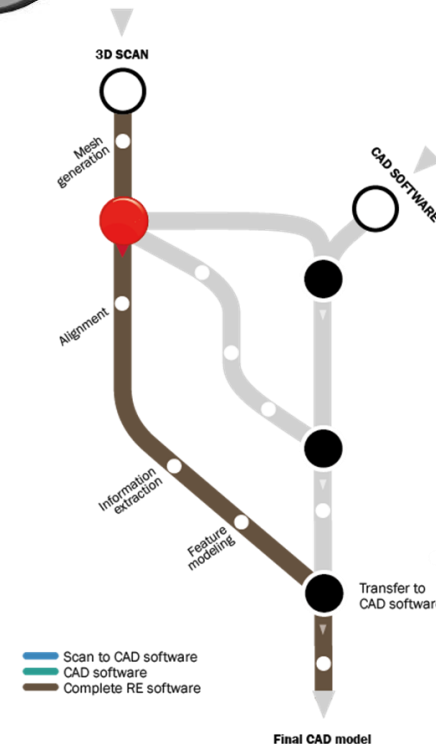
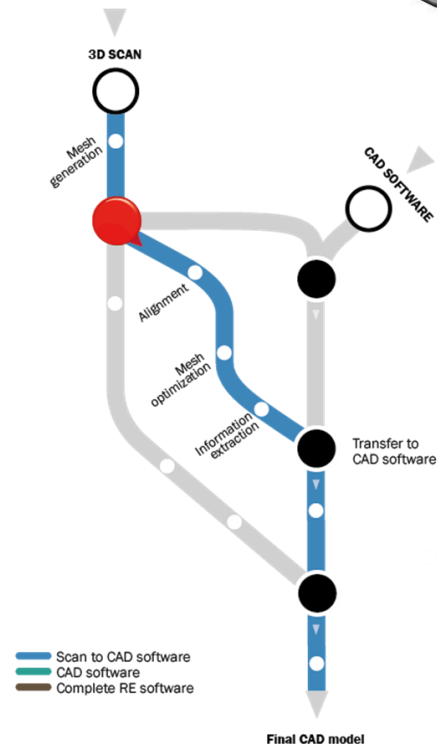
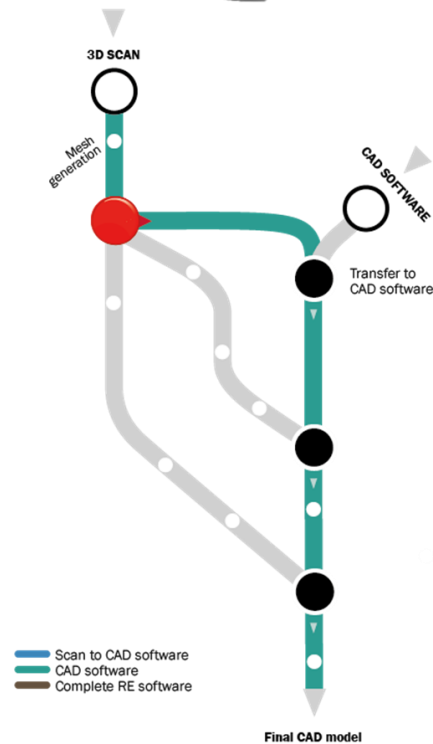
Object



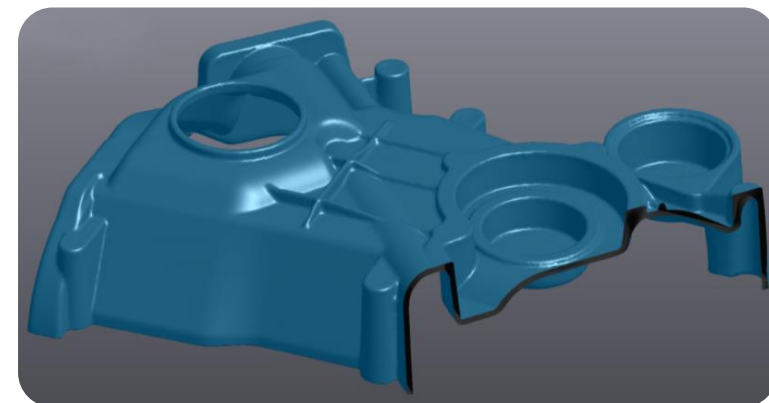
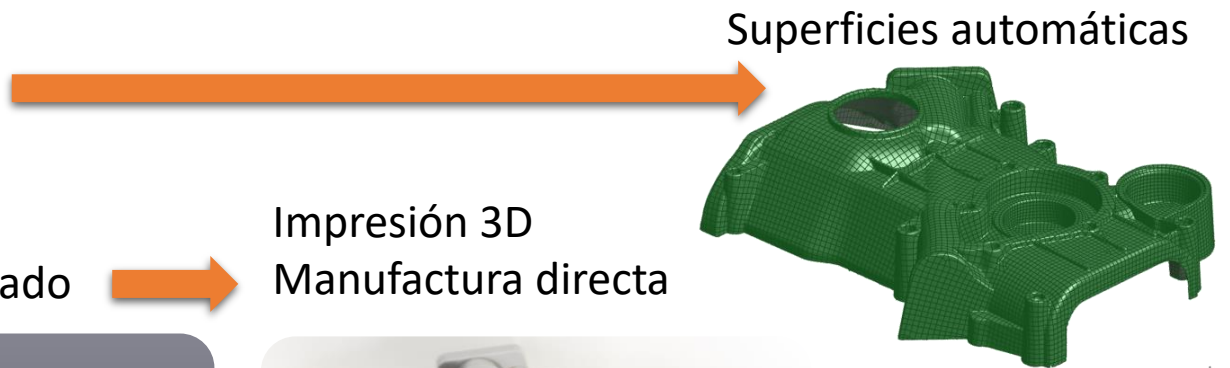
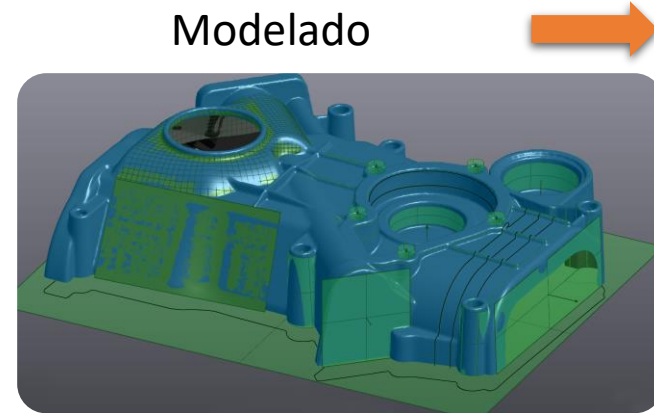
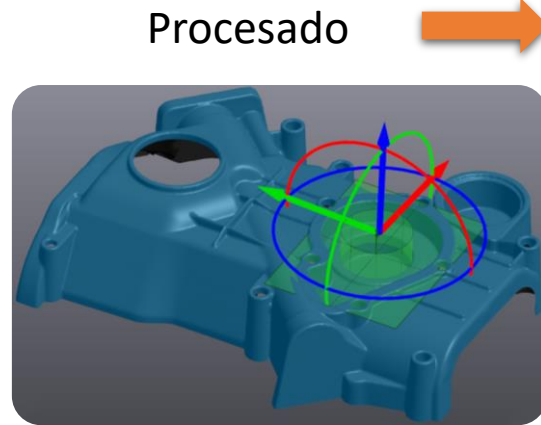
Scan



CAD



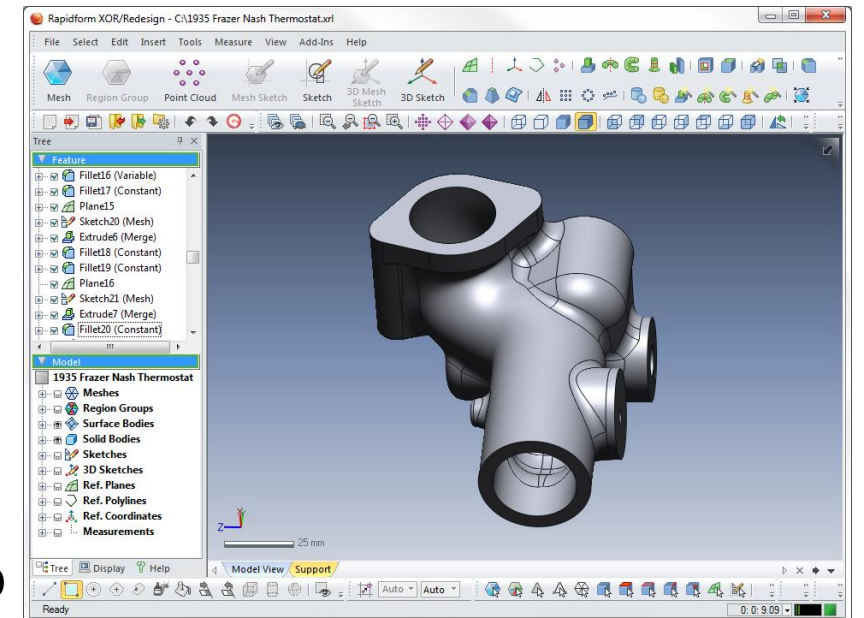
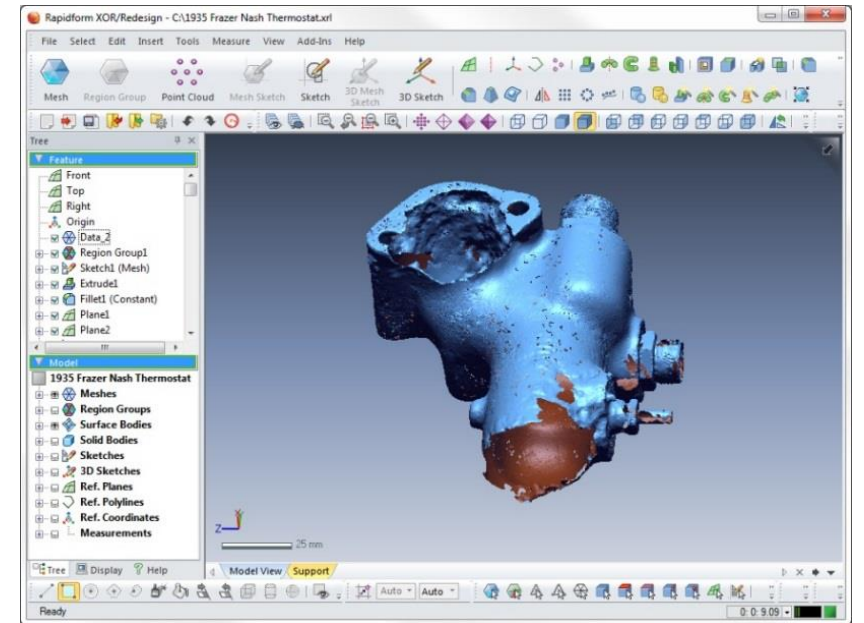
# DISEÑO Y MANUFACTURA DIRECTA: 3D SCAN TO 3DPRINT



# PROCESO DE INGENIERÍA INVERSA 1 CON

**Dx** Geomagic® Design X™

Escaneado 3D

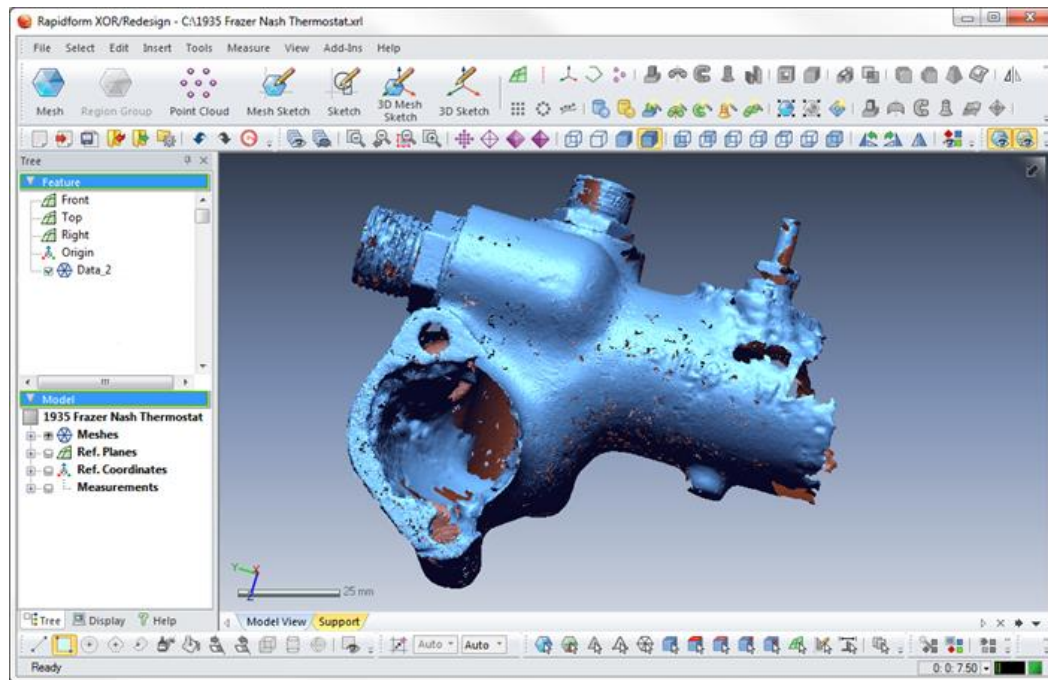


Resultado en Fichero CAD

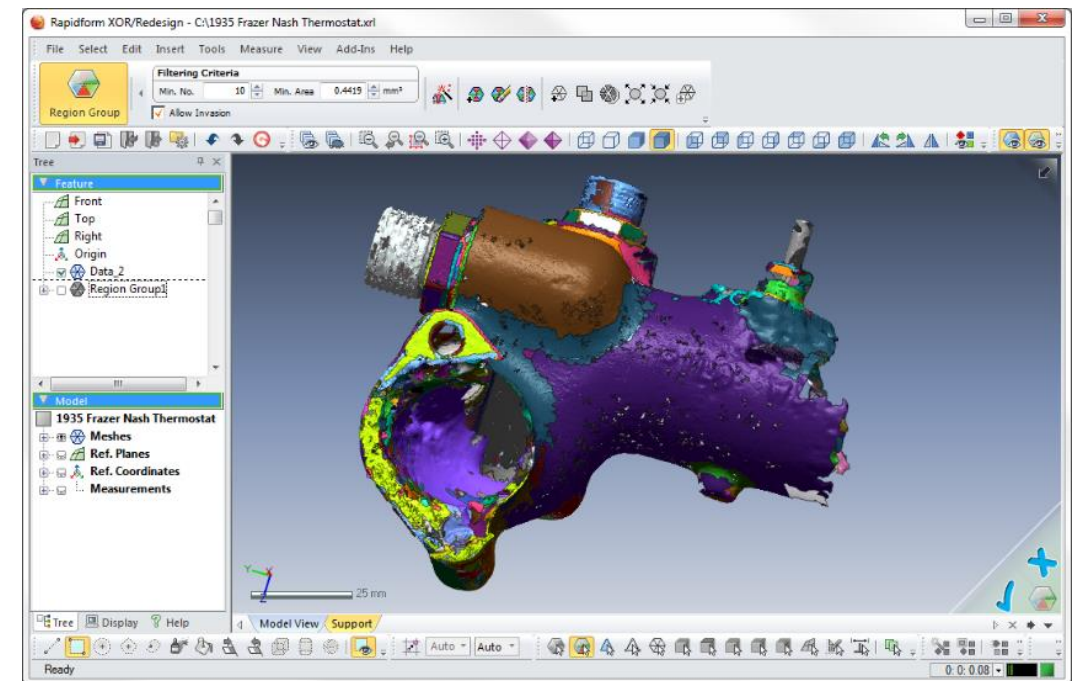
# PROCESO DE INGENIERÍA INVERSA 2 CON

**Dx** Geomagic® Design X™

## Collect Scan, Create Mesh and Recognize Features



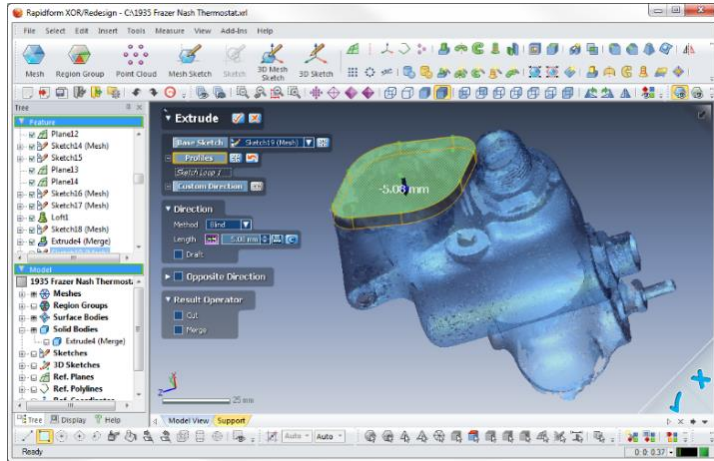
**Skip mesh cleanup**



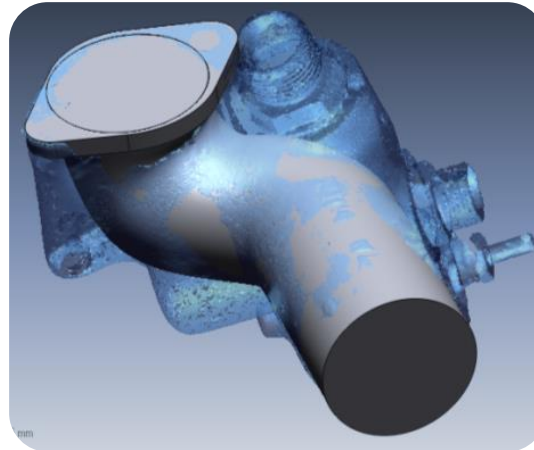
**Automatic mesh segmentation**

# PROCESO DE INGENIERÍA INVERSA 3 CON Geomagic® Design X™

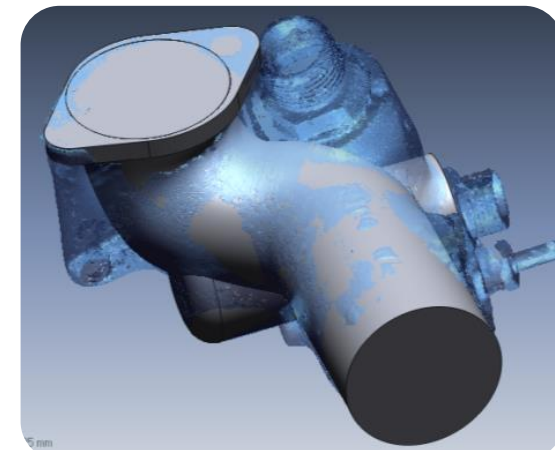
## Create Features



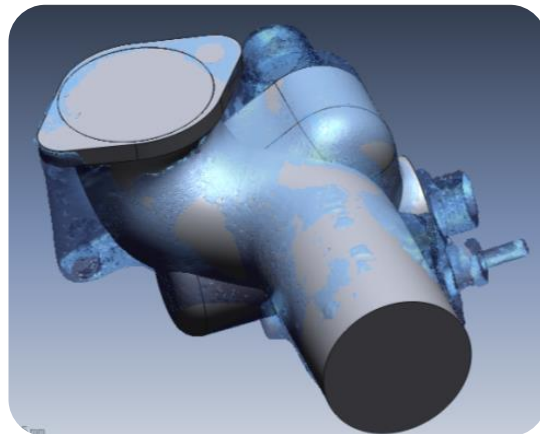
**Extrude**



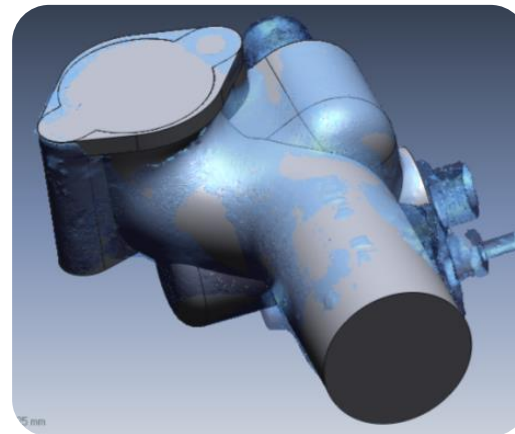
**Loft**



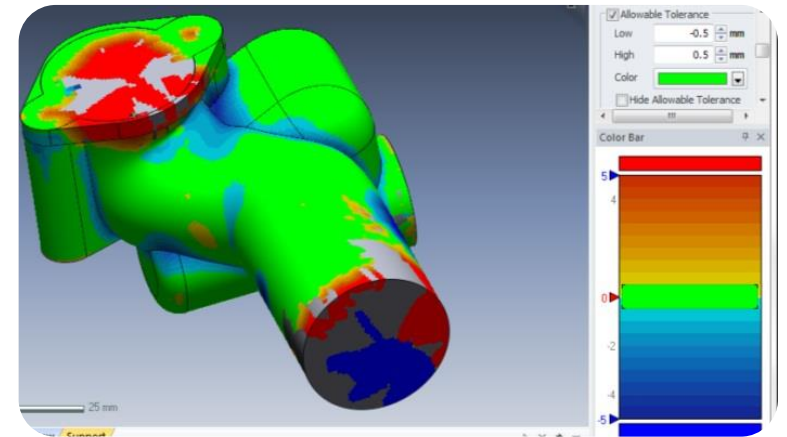
**Revolve**



**Extrude**



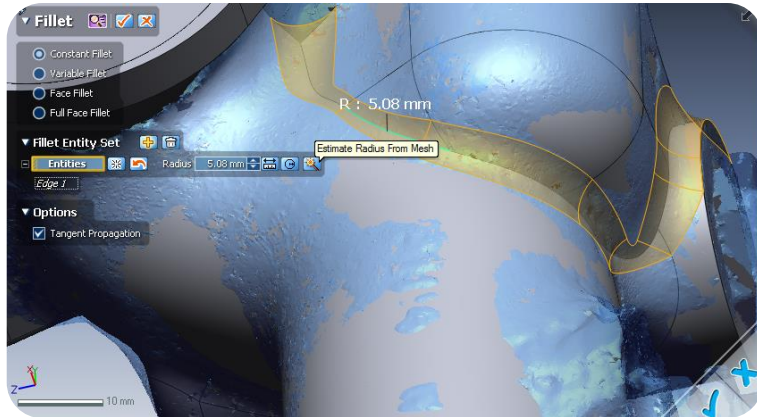
**Extrude**



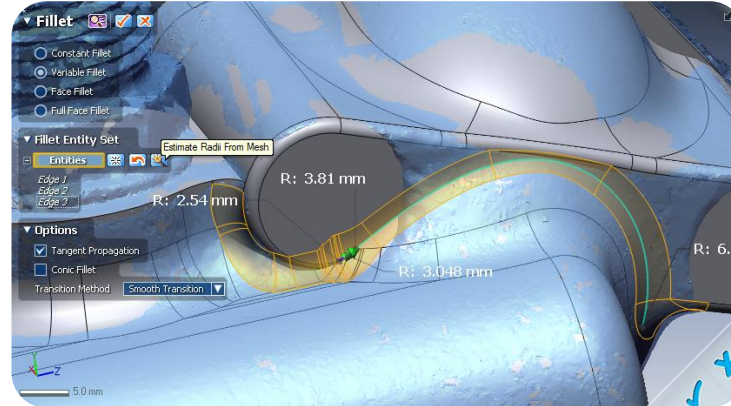
**Accuracy Analyzer**

# PROCESO DE INGENIERÍA INVERSA 4 CON Geomagic® Design X™

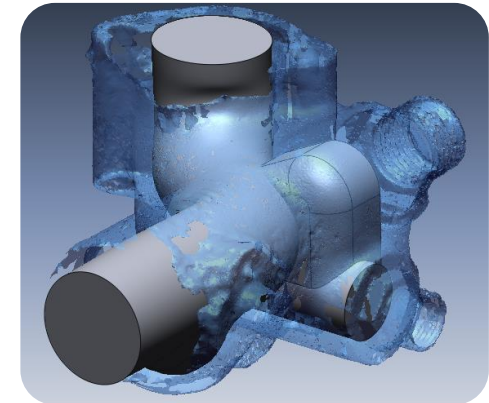
## Add Details



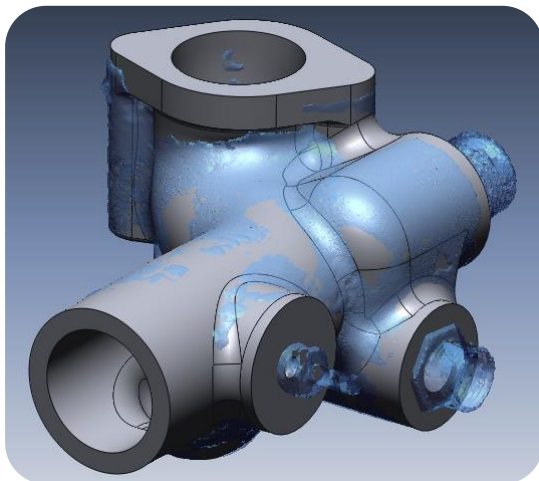
Filleting with Magic Wand



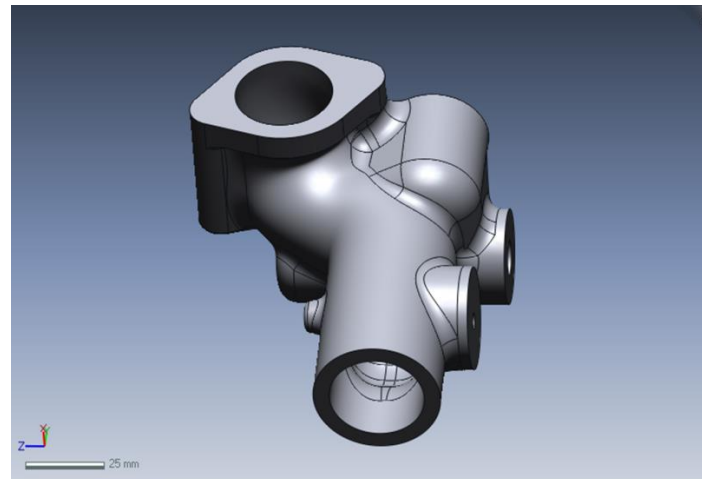
Filleting with Magic Wand



Offset body



Boolean cut



Finished Solid Model 3D Printed in Wax and Sand Cast